



COMPACT
for
SUCCESS

**A Model for
University / District / Community
Collaboration**

www.compactforsuccess.org

Partners



**SAN DIEGO STATE
UNIVERSITY**

Lou Murillo, Director
Lisa Santa Cruz, Admin. Coordinator
Maribel Flores, Admin. Asst



SWEETWATER
UNION HIGH SCHOOL DISTRICT

Mayra Gutierrez, Director
Hilda Bender, Counselor
Alicia Davila, Admin. Asst.



Ed Lopez, Director

Presentation Overview

- Compact for Success – Historical Perspective
- Elements of Partnership
- Compact Benchmarks
- Trend Data / Core Activities
- New Compact Components



College Advisement



Academics



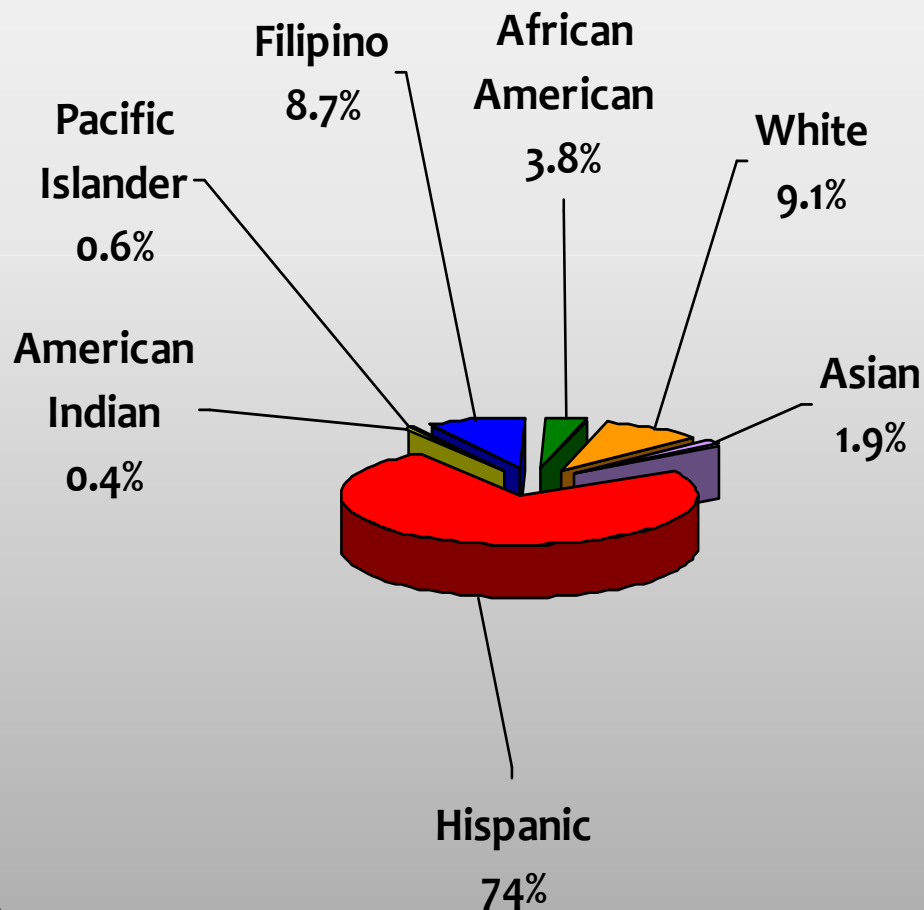
District Wide Initiative

An Academic Partnership

Goal: Improve College Attendance Rates

- To prepare students for the rigor of college
 - Strength of Curriculum
 - Motivational Activities/Support
 - AVID
 - GEAR-UP
- Guarantee admission to SDSU
- Provide academic support while at SDSU
- Financial aid support for those who qualify through the Sweetwater Education Foundation

Sweetwater Union High School District Characteristics



- Largest and most diverse 7-12 system in California
 - Total Enrollment in 2000-2001: 35,330
 - Total Enrollment in 2010-2011: 42,209
 - 25 schools; 14 of which are Title I with as many as 91% free and reduced lunch participants
 - More than 18% growth in 7 years
 - More than 50% of students speak a language other than English at home

Compact for Success Eligibility Requirements

COMPACT for SUCCESS is a partnership between SDSU and Sweetwater that guarantees admission to SDSU if students meet the following benchmarks:

- Enrolled by 9th grade
- Attain a **3.0 CSU GPA and maintain through senior year**
- Complete all CSU **“a-g”** course requirements
- Satisfy the **ELM** (Entry Level Math Placement Test) & the **EPT** (Entry Level English Placement Test)
- Have taken the **SAT Reasoning or ACT** test

Students who meet benchmarks and enroll at SDSU are called Compact Scholars.



COMPACT *for* **SUCCESS**

Trend Data for SUHSD

	Applied	Admitted	Enrolled	Proficiency	Compact Scholars
2000	789	639	308	88	
2006	1569	1250	628	237	203
2007	1670	1286	695	238	197
2008	1750	1406	703	274	227
2009	1754	1524	749	339	266
2010	1747	1069	650	418	394
2011 Application Cycle in Progress	1622			597	

122%

67%

111%

578%

2010/2011 Core Activities

- 6th grade outreach – **nine elementary schools, 663 students**
- Compact Advisors at middle schools – **2,260 Participants**
- 7th Grade Visit to SDSU – **2,730 Participants**
- 7/8th grade - College: Making It Happen Nights – **Spring Activity**
- HACU Youth Leadership Forum at SDSU – **620 Participants**
- Compact Advisors at high schools – **995 Participants**
- 10th Grade Visits – **1,582 Participants**
- 11th Grade Assemblies – **Spring Activity**
- AVID Night - **300 Participants**
- Financial Aid Nights – **Spring Activity**
- District College Fair– **1,360 Participants**
- College Expo – **Spring Activity**
- Peer Counseling Program– **137 Participants from Southwestern College**
63 Participants from Southwestern College



Compact for Success Outreach Data

2008/2009 Academic Year vs 2009/2010 Academic Year

Compact Advisors working in SUHSD School Sites

	<u>2008/2009 Academic Year</u>	<u>2009/2010 Academic Year</u>
Middle School Sites	5,212	6,309
GEAR UP High School Sites	1,410	2,291
Total	6,622	8,600

Compact College Readiness Efforts & Participation

<u>Core Activity</u>	<u>2008/2009 Dates</u>	<u>Grade</u>	<u>Totals</u>	<u>2009/2010 Dates</u>	<u>Grade</u>	<u>Totals</u>
Kids2College Program - CVESD	Fall semester	6th	386	Fall semester	6th	543
7th Grade Campus Visit	October 11, 2008	7th	3,577	October 24, 2009	7th	3,926
College Making It Happen Nights	February - March 2009	7th & 8th	2,721	February - March 2010	7th & 8th	2,167
10th Grade Campus Visit	September - December 2008	10th	1,444	September - December 2009	10th	1,582
GEAR UP Fair - 11th Grade				February 17, 2010	11th	600
11th Grade Recognition Assemblies	March 2009	11th	2,027	March 2010	11th	2,039
SAT/ACT Workshops	March 2009	11th	444	March 2010	11th	705
District College Fair	September 17, 2009	9th-12th	1,100	September 17, 2009	9th-12th	1,360
District AVID Night	November 20, 2008	7th-12th	700	January 21, 2010	7th-12th	800
Financial Aid Events	January 2009	12th	3,007	January 2010	12th	3,086
College Expo	April 18, 2009	7th-12th		April 17, 2010	7th-12th	1,000
Phone Call to SUHSD Seniors	April 30, 2009	12th		April 30, 2010	12th	873
SDSU Peer Counseling Project				March-April 2010	Transfer	59
Total			15,406			18,740
Total for the Academic Year			22,028			27,340

Compact Advisor Program



Compact Advisors serve as peer mentors to keep students motivated, informed, and on track. Whether meeting with their Compact Advisor individually or in a small group, each student receives extra attention to help motivate them to stay focused on their new goal: an attainable, affordable and successful future as a college student.

Compact Advisor Program

Compact Advisors serve as peer mentors to keep students motivated, informed, and on track. Whether meeting with their Compact Advisor individually or in a small group, each student receives extra attention to help motivate them to stay focused on their new goal: an attainable, affordable and successful future as a college student.

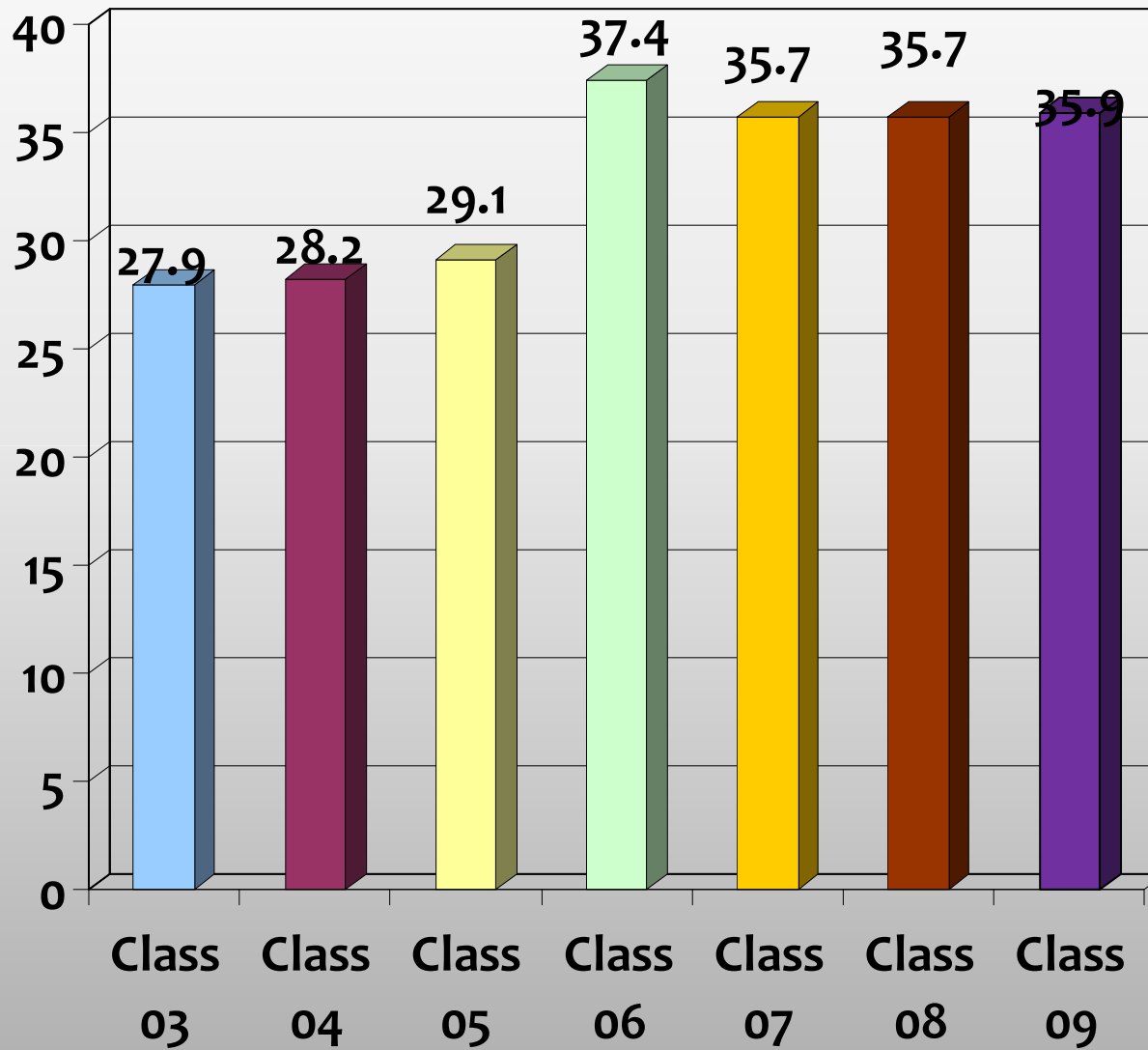
Personal Qualities:

- Good academic standing
- Sense of social justice
- School or community involvement
- Strong work ethic
- Ability to work and build relationships with faculty and students.
- Demonstrates initiative

Leadership Characteristics:

- Strategic planning and problem solving
- Setting deadlines and time management
- Pays attention to detail
- Works independently, with little or no supervision

SUHSD A-G” Performance



Source: CBEDS

SUHSD EAP Results - English

	2003 Test (Class of 2004)	2004 Test (Class of 2005)	2005 Test (Class of 2006)	2006 Test (Class of 2007)	2007 Test (Class of 2008)	2008 Test (Class of 2009)	2009 Test (Class of 2010)	2010 Test (Class of 2011)
Tested	3220	3791	5999	6278	6758	6652	6797	6701
Exempt	513	424	678	693	847	832	826	1106
%	15.9%	11.2%	11.3%	11%	12.5%	12.5%	12%	17%

SUHSD EAP Results - Math

	Math 2003 (Class of 2004)	Math 2004 (Class of 2005)	Math 2005 (Class of 2006)	Math 2006 (Class of 2007)	Math 2007 (Class of 2008)	Math 2008 (Class of 2009)	Math 2009 (Class of 2010)	Math 2010 (Class of 2011)
Tested	1811	2067	2506	2725	2850	2954	3260	3054
Exempt*	744	927	1150	1157	1345	1479	1627	1649
%	41%	44.8%	45.9%	42.4%	47.2%	50.06%	49.91%	45.48%

*Data includes both exempt and conditional exempt status.

Compact Scholars Program

Designed to support Compact students during their tenure at SDSU with:

- Mentoring
- Tutoring
- Internships
- Support services
- Advising
- Study Abroad
- Scholarship support based on need



Goal: Students will graduate in 4 years.

Contact Information: Janet Abbott, Director
Compact Scholars Program
Division of Undergraduate Studies
(619) 594-3810
compactscholars@gmail.com



Sweetwater Education Foundation Scholarships

- Students who meet all benchmarks who submit a FAFSA and demonstrate financial need are eligible for scholarships
 - Out of 203 Compact Scholars, 89 received a need-based Compact Scholarship for 2006-2007
 - Out of 197 Compact Scholars, 59 received a need-based Compact Scholarship for 2007-2008
 - Out of 227 Compact Scholars, 71 received a need-based Compact Scholarship for 2008-2009
- The Sweetwater Education Foundation has raised over \$1.8 million for graduating classes.
- Nearly \$700,000 and over 400 scholarships have been awarded in just 3 years.

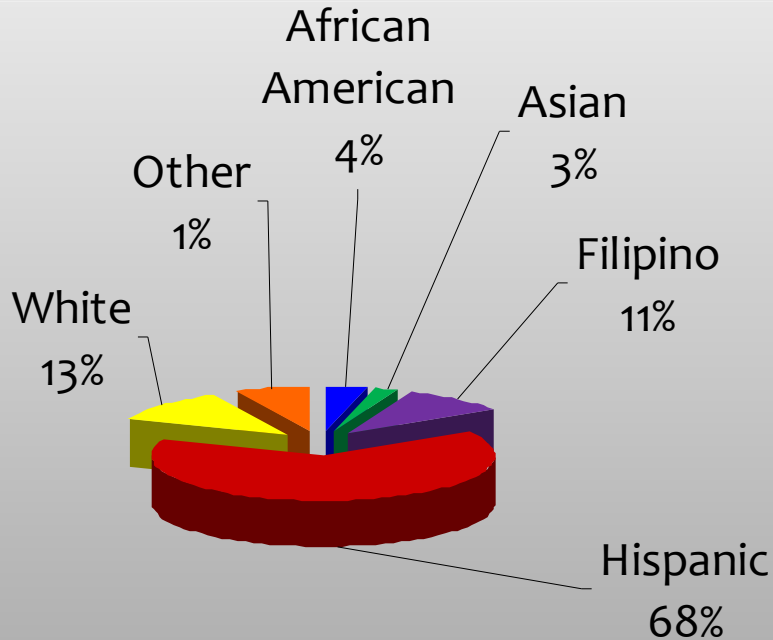
Compact for Success Video



Compact for Success: New Elements

- Kids2College Program
- Peer Counseling Program

Chula Vista Elementary School District Characteristics



- Primary feeder district to SUHSD
 - Total Enrollment in 2000-2001: 23,288
 - Total Enrollment in 2008-2009: 27,496
- Largest K-6 District in California
- 48% of students are free and reduced lunch participants
- More than 35% of students are English Learners



The Program

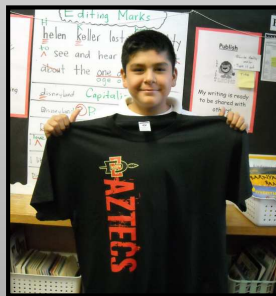
Our user-friendly college awareness curriculum is designed to make sixth-grade students more aware of how education impacts their future.

The curriculum is implemented over six lessons, each with a theme towards our culminating event, a student presentation on a career of their choice.



Lesson Overview

- Lesson 1: Post-Secondary Options
- Lesson 2: Career Paths
- Lesson 3: Getting to College (Middle & High School)
Compact for Success
- Lesson 4: Financial Aid
- Lesson 5: Career Panel
- Lesson 6: Student Career Presentations





Participating Schools

FALL

- Los Altos Elementary
- Juarez-Lincoln Elementary
- Finney Elementary

SPRING

- Parkview Elementary
- Loma Verde Elementary
- Vista Square Elementary
- Rice Elementary

*New Locations: Spring 2011

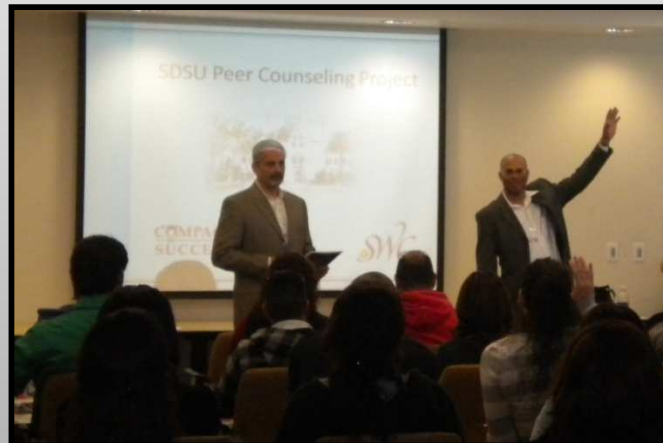
- San Ysidro School District: La Mirada Elementary
- SDUSD: Memorial Preparatory for Scholars and Athletes

*Funds provided by Aztec Parent Fund Grant

SDSU Peer Counseling Program

Mission Statement

- Provide support, information and guidance to assure student success in the transition from Southwestern Community College to San Diego State University



SDSU Peer Counseling Program

Program Partners

San Diego State University

- Compact for Success Program
- Educational Opportunity Program
- Community Based Block Counseling Program

Southwestern Community College

- Extended Opportunity Program & Services
- Office of Student Development

San Diego City College

- Extended Opportunities Programs & Services
- Office of Student Services

SDSU Peer Counseling Program

The following represents the goals of the SDSU Peer Counseling Program:

- Provide target community college students information about academic support, financial aid, study skills and other information regarding transferring to SDSU
- Increase the number of community college transfer students from the targeted community colleges who experience success at SDSU and graduate within three years
- Increase the retention rate of targeted community college students once they transfer to SDSU
- Provide counselor candidates in the CBB Program with a professional experience working with community college students



Questions?

Contact Information:

Lou Murillo

Office of Collaborative
Programs

San Diego State
University

(619) 594-0732

lmurillo@mail.sdsu.edu

Mayra Gutierrez

Office of Post Secondary
Initiatives

Sweetwater Union High
School District

(619) 600-3315

mayra.gutierrez@sweetwaterschools.org



COMPACT
for
SUCCESS

**A Model for
University / District / Community
Collaboration**

www.compactforsuccess.org